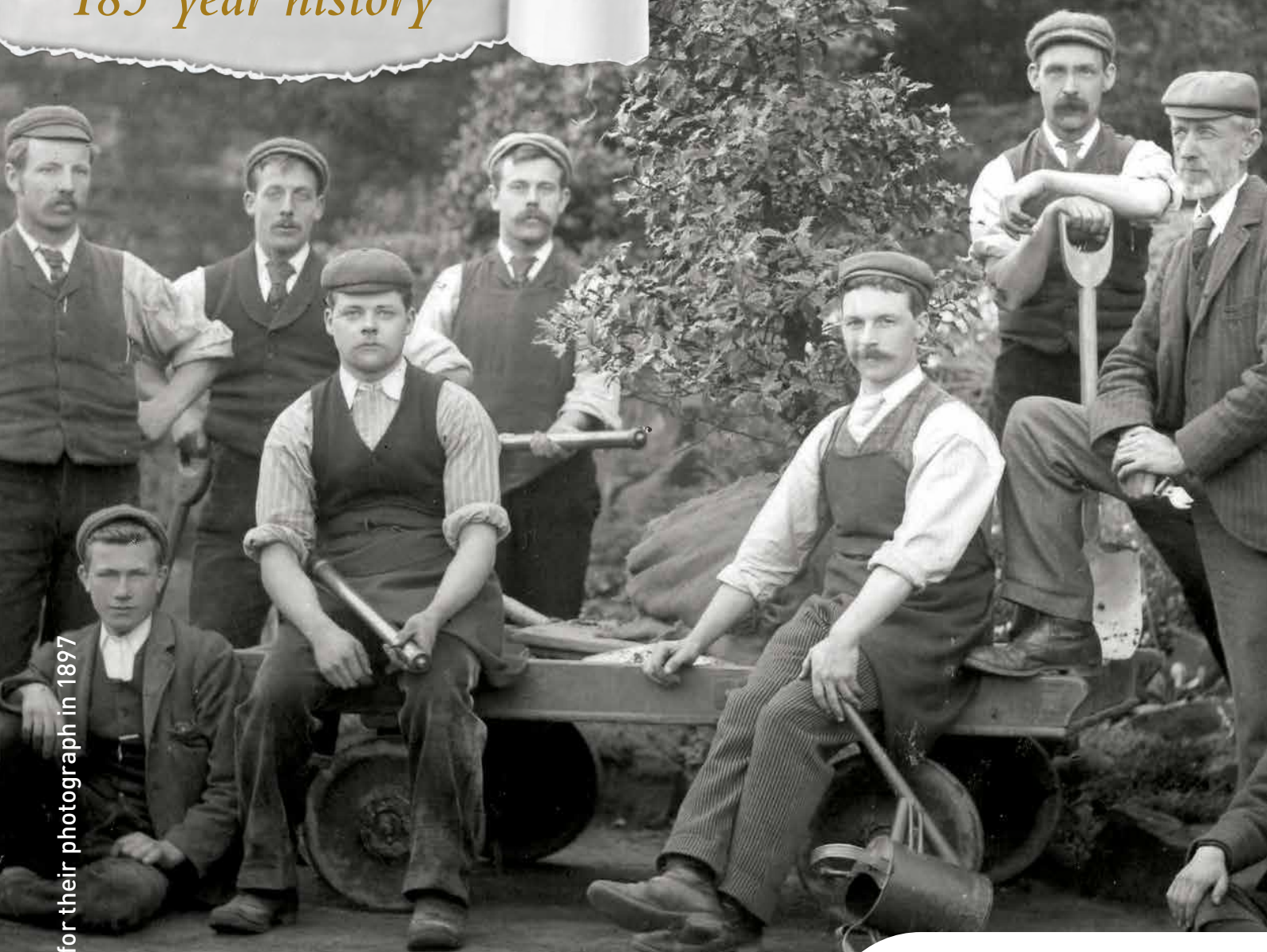


Perennial News

ISSUE 46 | SPRING - SUMMER 2024

*Thank you for
being part of our
185 year history*



Gardeners pose for their photograph in 1897



Helping people
in horticulture
Perennial

What's inside for you?



Page 4
Plants for Perennial continue to bloom



Page 9
In conversation with Steve McCurdy from Majestic Trees



Page 10
Perennial: A story of compassion brought about by mavericks



Page 13
Our gardens



Page 16
Tribute to Jennifer Marie Woolveridge 1939-2023

A warm welcome

Welcome to another exciting edition of Perennial News. As we celebrate our 185th year of serving the horticulture community, I feel privileged to be here at Perennial during this historic milestone and want to thank you for being part of our much-cherished history.



Additionally, I am thrilled to announce that this year marks several other significant milestones for us as we celebrate a remarkable 20 years of dedicated service from Alan Titchmarsh MBE as our President. Alan's unwavering commitment has been instrumental in helping to guide Perennial through both triumphs and challenges, shaping us into the resilient charity we are today. Furthermore, it has been an incredible 30 years since we were generously gifted York Gate, a true Yorkshire gem that continues to be celebrated as one of the finest small gardens in Britain.

In a world where uncertainty seems to be the only constant, it is essential to acknowledge that for many in the horticultural community, times remain exceptionally challenging. Underpinned by the continued cost of living crisis, we are witnessing unprecedented demand for our services – this is forecast to continue for a further five years.

No single organisation can improve outcomes for the individuals they serve in isolation and now, more than ever, we need your support to help us.

I ask each one of you to dig deep and join us in our fundraising efforts. From fitness challenges to bake-offs, there are countless ways to get involved and make a meaningful difference. Your generosity and commitment will help us meet the significant increase in demand for our services and ensure that we continue to be a lifeline for individuals in the horticultural community facing difficult times.

Thank you for being an integral part of our community and for your continued support to our cause.

Jamie Gault, Chief Executive

Looking for advice, information, or support?

Helpline: 0800 093 8543 | perennial.org.uk/services-contact-form

Ways we can help: perennial.org.uk/help

Something else?

General enquiries: 0800 093 8510 | info@perennial.org.uk

Perennial Partners: pswainston@perennial.org.uk | kcooney@perennial.org.uk

Fundraising & events: events@perennial.org.uk

Volunteering: volunteer@perennial.org.uk | **Press:** marketing@perennial.org.uk

Perennial, 115-117 Kingston Road, Leatherhead, Surrey KT22 7SU

www.perennial.org.uk

News



Celebrating 185 years: Perennial's enduring legacy

This year marks a significant milestone in the history of Perennial, formerly known as The Gardeners' Benevolent Institution, as we commemorate our 185th year of service to the horticulture community. Founded on January 17, 1839, during an annual dinner for 'nurserymen, florists, and amateurs' at the Crown and Anchor Tavern in London, our charity has a rich history deeply rooted in compassion and support for gardeners.

From our inception, the Gardeners' Benevolent Institution set out with a noble purpose: to provide financial assistance to gardeners, particularly head gardeners, in their retirement years. This initiative stemmed from a recognition that many individuals who dedicated their lives to tending to estates and public gardens faced financial insecurity in their later years. Despite their lifelong dedication, low wages often left them without the means to support themselves after retirement, leading to the loss of their tied property and financial struggles.

Over the past 185 years, we have remained steadfast in our commitment to helping individuals within horticulture. Through various programmes and initiatives, we continue to provide essential assistance to those experiencing hardships, ensuring that they can live with dignity and security during their working lives and retirement years.

As we reflect on our journey spanning nearly two centuries, we are reminded of the enduring impact of compassion and community support. Perennial's legacy serves as a testament to the power of collective action in uplifting and empowering individuals within the gardening community. As we look ahead to the future, we remain dedicated to our mission of providing assistance, guidance, and support to gardeners across the nation, honouring the spirit of compassion that has guided us for 185 years and counting.

Our story can't end here

We're calling for your support in this unique year. Through this issue you can explore our story of compassion spanning nearly two centuries and find out how to join us in shaping the next chapter.

Plants for Perennial continue to bloom

Plants for Perennial are back blooming in homes and gardens across the UK in aid of all those who work with plants, trees, flowers or grass.

The showy plant collection, from four major wholesale nurseries in Hereford and Worcester, raised £16,000 for Perennial last year. Every plant sold adds a seed of hope to someone's life while creating an abundance of colour, form, fragrance and wildlife in gardens.

Two new garden favourites join the collection for 2024, with a total of six now available to buy in stores this summer including perennials, shrubs and climbers.



Look out for...

Allensmore Nurseries:

- **NEW** Fuchsia 'Waltz Jubilteen' – 'Flowers that look straight at you!'
- Dianthus 'Pink Celebration' – Clusters of fragrant, pink flowers with a distinctive ruffled edge and a sweet, spicy fragrance all summer.

The Bransford Webbs Plant Company:

- Nemesia 'Peaches n Cream' - Heavily scented blooms of pink and lemon throughout summer, attracting bees to the garden.

New Leaf Plants:

- Clematis 'Prince George' – Freely produces an abundance of white flowers with pale blue undersides throughout the summer.

Wyevale Nurseries:

- **NEW** Hydrangea 'Cherry Explosion' – Large, red petals surround clusters of small, pastel pink, star-shaped blooms, creating an outstanding contrast. The serrated leaves are lush and green throughout the spring and summer. The gorgeous lacecap flowerheads change from cherry red to burgundy in the autumn.
- Salvia Cuello Pink and Cuello White – Both salvias flower early summer to late autumn and are bush-forming and wildlife friendly.

Pick up a Plant for Perennial at your local garden centre to show your support.

Alan Titchmarsh - 20 years as our President

Celebrating two decades, Alan Titchmarsh stands as the cornerstone of Perennial's legacy, having stood as Perennial's President with unwavering dedication and passion. As he marks his 20th year as our President, Alan's commitment to Perennial has been nothing short of extraordinary, helping us to transform and help the lives of countless individuals within the horticultural community.

"Perennial's work extends far beyond plants and trees, reaching those who dedicate their lives to maintaining our outdoor spaces and making the world a more beautiful place. At its core, Perennial's work revolves around nurturing people, providing indispensable help and care to all those employed or retired from horticulture.



It's a source of immense pride for me to be the President of Perennial, a position that allows me to champion its relentless dedication to helping people and changing lives."

We're incredibly fortunate to have Alan as our President. He has not only helped shape the trajectory of Perennial but has also inspired a profound sense of purpose and solidarity within the horticulture community, making a lasting impact that resonates far and wide.

Increasing numbers of people seeking our help

In the world of horticulture, times are tough for many of those who look after our treasured outdoor spaces. The challenges of the current landscape have hit our sector particularly hard, with many facing a myriad of difficulties. Our recent data reveals a stark reality, showing a worrying 17% increase in individuals from the horticulture sector seeking our help. This surge in demand underscores the profound impact of the ongoing struggles faced by many.

Despite the adversity, Perennial shines like a beacon of hope lighting the way for those in need, before they run into difficulty. The Perennial website serves as a vital resource for those seeking information to navigate difficult situations. Our online advice, information and tools are tailored for those in

horticulture, and have experienced a notable 27% surge in usage, highlighting their critical role as a lifeline during these challenging times. The harsh reality is that more people than ever are finding themselves without stable housing, resorting to sleeping in vans, living in temporary accommodation or relying on the hospitality of friends' sofas.

In the face of such challenges, every contribution and donation plays a significant role in helping those in the horticulture sector weather the storm when they need it most. Together, through collective effort and your unwavering support, we can strive to alleviate the burdens weighing heavily on the shoulders of those in the horticulture community.

Pie and Pint Quiz Night

Sometimes, the best ideas are the simplest ones, and the original idea behind Perennial's Pie and Pint Quiz Night is a prime example of this. It was a conversation last year with Mark Gregory from Landform about industry events that led to the initial idea... "Industry flashy dinners are all well and good, but what most of us really like is a pie and a pint."

Following the success of last year's inaugural event, this year's took place in January and tickets sold out almost immediately. A fun time was had by all and the event brought together prominent figures from the horticultural and landscaping sector and, more importantly, on the night raised nearly £1,000. Every pound raised goes towards helping people in horticulture when they get into difficulty. We would like to thank everyone who came to support us, including quiz masters David Dodd, Ann-Marie Powell, and James Alexander-Sinclair.

If you would like to have a chat about this or any other fundraising idea, or would like to talk about becoming a Perennial Corporate Partner, please contact Kate or Phil: partnerships@perennial.org.uk

“ Industry flashy dinners are all well and good, but what most of us really like is a pie and a pint. **”**
Mark Gregory from Landform

Find out more, get involved or donate at perennial.org.uk



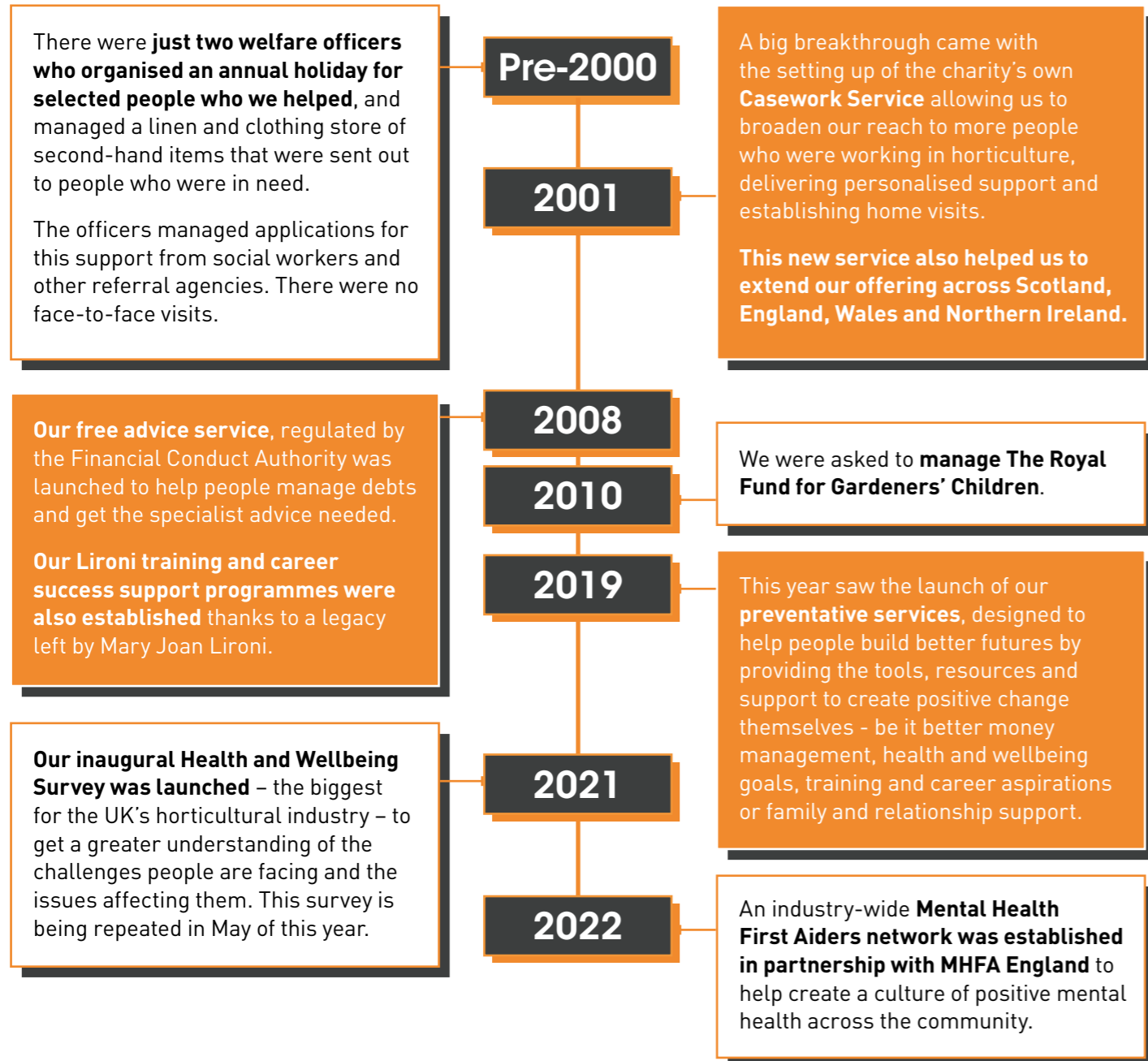
Perennial are here, offering advice, information and support

Since Perennial opened its doors in 1839 our aim has been to put people first – we initially were set up to provide a source of income to retired gardeners.

Over time, as the times and people's needs have changed, so have the services we provide, but the heart of what we offer remains the same – to be there, when needed, to offer the best advice, information and support in a way and at a time that makes the greatest difference in someone's life and their future.

How far we've come

Take a look at some of the major milestones in the evolution of our free services, along with the innovations, changes, and new approaches introduced since the year 2000.



The free services we offer now

Be money smart

Financial wellbeing with nudge, our money management tool, for everyday budgeting, spending & savings as well as top tips and advice available on our website 24/7.

Be health smart

Improved physical and mental health with our Health & Wellbeing app packed with fitness, nutrition and mindfulness tools.

Be career smart

New for this year, access to our Career Hub 'SnapDragon' which is full of resources to help people move ahead in their career with confidence.

*Gardeners' Royal Benevolent Society (trading as Perennial) is authorised and regulated by the Financial Conduct Authority under FRN: 694883 (fca.org.uk)

Casework

Providing advice and information about housing, health and social care, employment, training, benefits, family and relationships as well as signposting you to specialist services.



Physiotherapy

We know that back and joint pain is the biggest issue facing people working in our horticultural community, so we offer a free physiotherapy service to help keep you moving.



Debt Service*

Our free advice can help people manage debts and get the support you need. We can give advice over the phone, video call or in person based on the information we

gather, we can recommend ways to manage debts. We can help people budget more effectively, as well as manage rent, utility and council tax arrears. Our advice on Consumer Credit & Mortgage debt is authorised and regulated by the Financial Conduct Authority. We do not charge for the services we provide including our regulated activity.



Legal Advice

Independent, expert advice including employment, family or relationship issues, property or tenancy concerns or wills and probate.



For more detailed information on all of the above services simply head to perennial.org.uk

While so much has changed, one constant is that it is only possible for us to offer all these free services thanks to the generosity of all those who donate and fundraise for us

Exclusive garden tours and special events 2024

Treat yourself or someone you know to one of our exclusive garden tours.

For bookings, information and full event listing: perennial.org.uk/events | 0800 093 8792

Wynyard Hall, County Durham 9 July | £95
Enchanting escape where history and nature flourish amidst David Austin roses and woodland haven.

Rhodds Farm, Herefordshire 23 July | £95
Feeling timeless, this extensive natural garden is nestled without boundaries in a woodland hillside.

Ozleworth Park, Gloucestershire 19 June | £85
Magnificent Cotswold church estate with meticulously designed gardens, ornate waters and absorbing views.

Whitlenge Gardens and Stone House Cottage Nursery, Worcestershire 31 July | £80
Adventure through a magical fairy kingdom, a walled 'show garden' and microclimates growing unusual specimens.

Madresfield Court, Worcestershire 27 June and 24 October | £95
Iconic country grounds laden with a rich fruit heritage, mature avenues and a mighty rock garden.

Perennial is announced as STIHL UK's Charity of the Year



Pictured here (left to right): From Perennial Jonathan Sharpe, Beth Porter, Phil Swainston, from STIHL Anna Perkins, Vicky Tween, Simon Hewitt

STIHL will be supporting and fundraising for Perennial throughout the year, and their team will take part in a wide range of fundraising activities and sponsored events including bike rides, hikes, car washes and bake-offs.

As part of the new charity partnership with Perennial, STIHL will launch their Equipment Replacement Fund, to help those in need with donations of tools and PPE.

STIHL GB's Head of Marketing, Simon Hewitt, said: "We are delighted to be supporting Perennial, a charity whose purpose is so closely linked to our own values. STIHL has been focused on making people's lives easier when working in and with nature since our founder, Andreas Stihl, invented the first portable chainsaw in the 1920s. In pledging our support to Perennial and combining our efforts we hope together we can help many more people in horticulture."

For more Perennial news visit: perennial.org.uk/news



In conversation with...

We are delighted to have so many amazing Perennial Partners. As we celebrate our 185th year, we're pleased to have a quick catch-up with Steve McCurdy from Majestic Trees, one of our earliest partners who has consistently supported Perennial in numerous ways, including fundraising, attending events, and supporting us as a charity (to name just a few). His unwavering dedication to supporting both Perennial and individuals within the horticulture community truly shines through.



Steve McCurdy
from Majestic Trees

How did you first hear of Perennial and what makes you support us?

I remember Perennial before it changed its name from the Gardeners' Royal Benevolent Society and in those days reading about it in industry publications. I was invited to an industry event by some of the team soon after we started Majestic Trees.

Name one thing that you love and dislike about the industry.

I always marvel at nature, and how it is possible to graft, and in general develop and successfully lift mature specimens and grow them on. The thing I dislike about the industry is that so many of my colleagues undervalue what they do, and are willing to sell plants so cheaply and not for a fair return. This alone is one of the main reasons Perennial is so important – to be there for those in dire straits.

Majestic Trees is a hugely successful company. What advice would you give business owners, based on your own successes?

Start your business with vision, passion and drive, and make sure you really know your product. It's also important to employ a team

that love what they do, understand your costs and appreciate a good remuneration package that provides them with a higher standard of living.

How did you get into this sector and if you hadn't done this, what would you have done?

I used to spend 6-8 weeks every year in Suffolk with my grandmother on the farm who could grow anything; soft fruit, orchards, vegetables, cut flowers – literally anything! I did originally consider architecture, but by the time I left school I had decided on horticulture, so started looking around. I don't think I have ever told Mark Lane this, but I applied for an apprenticeship at Buckingham Palace and got turned down. My second choice was working at Thomas Rochford & Sons in Turnford, then the largest nursery in the UK with 400 employees, where I started in 1976 as an apprentice, attending college one day a week for three years. One of an intake of 12, I was one of the lucky two that were chosen to go overseas for experience at the end of our training, so I decided that I wanted to go to California where we worked in a houseplant nursery. I met my wife there, so it definitely was a great experience and changed my life.



Fundraise to help people in horticulture

Dig Deep and fundraise for Perennial

We're encouraging you to dig deep and fundraise for us. This is your chance to make a real difference to the lives of those working with plants, trees, flowers or grass. You can get involved and put on your own fundraising activities however you wish and contribute to our aim of helping people in horticulture.

What better way to top off your generosity and dedication than by coming together and celebrating all of our fundraising activities at our Dig Deep fundraising lunch (Friday 4 October at The Cumberland, London). Everyone who pledges their time, energy or funds, through incredible challenges, fundraisers and activities is invited.

Join us as we celebrate the incredible efforts and achievements of our supporters at the Silver Shovel Spotlight Recognition Awards hosted by James Alexander-Sinclair, plus a heartfelt "thank you" from Perennial President Alan Titchmarsh as Special Guest Speaker.

Let's come together as a community for this end-of-season fundraising dig, which will go towards helping people during the winter period and beyond. Tickets are on sale now, so please put the date in your diary, dig deep and join us!

Find out more: perennial.org.uk/dig-deep

Perennial: A story of compassion brought about by mavericks



Perennial has a rich history of helping people spanning nearly two centuries. Originally called the Gardeners' Benevolent Institution, our creation was first proposed in 1839 by George Glenny who was a florist, garden journalist and agitator. A true maverick of his day. His motive and reasoning was little more than that other trades had a benevolent fund, and it was reported as: 'While the butchers, bakers, drapers and almost every other class of tradesmen had their benevolent associations, he expressed his surprise that none had hitherto been attempted for so scientific and useful a body as the gardeners, [and] he did not know of any class who had so great a claim.'

Being set up as a friendly society, our key purpose was to dispense pensions, and our past is filled with stories of people who we've helped and those who have helped us. Modern society may have evolved since our creation, but the struggles people faced

back then were real and sadly too similar to many challenges faced by too many people today. The Institution remained a pension-granting body for 100 years until state pensions were introduced in the early 20th century.

In this article Jonathan Sharpe, Perennial Marketing Manager, ventures into our archive with garden historian and Perennial archivist Francesca Murray to bring to light the lives of real people and businesses from the early part of our past and to share their captivating stories.

The beginning of the modern state pension was the Old Age Pensions Act 1908, which provided 5 shillings (£0.25) a week for those aged over 70.

The first pension is awarded

The first gardener to be awarded a pension, in 1840, was John Standen, an estate gardener born in 1780, from Steyning in Sussex. Two years later Sarah Attlee, née Franklin, was the first widow awarded a pension in 1842. She was the widow of nurseryman William Attlee, and the 1841 census shows her living surrounded by gardeners in Hollow Road, Beddington, Croydon.

Persistence finally pays off

Those who applied to receive a pension weren't always successful, with many people applying year after year. Edward Marshall, a Northumbrian gardener from Alnwick, persisted in his efforts. After thirteen attempts, in 1854 he finally achieved success. His case was helped after an appeal was published in the Gardeners' Chronicle for the lengthiest applicants to be considered for immediate election. Regrettably, he passed away two years later in 1856 aged 76.

The changing life of a gardener

An example of the changeable nature of a gardener's life is found in Thomas Elsley, who was originally awarded his pension in 1897. The son of a gardener from Puttenham, Surrey, he had been a gardener all his life. Having worked as a domestic gardener in Hampshire and Bromley he ended up at Great Barr Hall in Staffordshire, working for the widow of the 3rd Baronet, Lady Mildred Bateman Scott. In the 1901 census, Elsley was listed as a market gardener.

Elsley was severely disabled when his application was successful in 1897 after being a life subscriber for 16 years; he had donated a total of £7 8s to the Institution. His circumstances changed in 1900, and he relinquished his pension on receiving a small legacy.

Elsley wanted to ensure that he could resume his pension if the legacy did not continue and it was resolved in the treasurer's letter to him that 'if ever you should be in a position to do without the pension and gave it up voluntarily and should need it again in the future, you would be put on the funds again without expense of the election'. He was reinstated on the pension list in 1903.

Mary Milley

Mary Milley received a pension in 1890 following the passing of her husband, William Milley, in 1852. William had served as a gardener to the Duke of Beaufort for thirteen years. Mary earned her living by needlework until she became almost blind. Upon receiving her initial pension payment, she promptly underwent cataract surgery for both eyes. On seeing her photograph (which had been taken for a special reason), she was delighted and exclaimed, "That's old mother Milley sure, with her basket and stick, but what a beauty! Well, I do look a staunch old body. Oh it's me exactly, with its poor furrowed face, but God has been very good to me!"

Mary was extremely thankful for the benefits she received and passed away in February 1899 aged 90. In the early part of our history, we had the help and support of numerous notable individuals, nurserymen and those connected to the world of horticulture.



THE LATE EDWARD ROGER CUTLER, DIED FEBRUARY 21: SECRETARY TO THE GARDENERS' ROYAL BENEVOLENT INSTITUTION.

William Thomson Memorial Fund

The William Thomson Memorial Fund was proposed by Scottish gardeners after the death of William Thomson, head gardener to the Duke of Buccleuch at Dalkeith, near Edinburgh. In February 1895, Charles Stewart, Honorary Secretary of the Royal Caledonian Horticultural Society (CHS) proposed to Edward Cutler (the Institution's Secretary) that rather than awarding memorial medals, it was better 'to hand over part of the sum raised to your institution'. This was not an unrestricted gift, but a proposal for Scottish candidates to have the right of election to a pension for one Scottish gardener or widow per annum in perpetuity. This extended the Institution's influence in Scotland and the Institution did not hesitate to allow the CHS preferential voting rights in lieu of the donation.



Mary Milley. Copyright RHS Lindley Collections

Festival Dinners

In 1851 Joseph Paxton, who is best known for designing the Crystal Palace and cultivating the Cavendish banana, was a prominent supporter of the Gardeners' Benevolent Institution. It was Paxton's involvement which brought about the Royal patronage via Queen Victoria and it was Paxton who hosted the well-documented Annual Festival Dinners for the charity in the significant year of 1851 and again in 1856. Other notable presidents of the Dinners include Charles Dickens (1852), Sir Robert Peel (1867), Joseph Chamberlain (1891) and The Duke of Westminster (1905).



The competitive edge

Sir Harry Veitch was one of the most successful nurserymen of the Victorian age. As well as being the head of the family business, James Veitch & Sons (one of the leading nurseries of the time), he was also Treasurer of the Institution for 25 years. To ensure he had the competitive edge over his rivals, he sent numerous plant collectors across the world to search for new species. In 1912, Veitch was knighted for his pivotal role in founding the Chelsea Flower Show and for his outstanding contributions to horticulture, making him the first horticulturist to receive such an honour.

firm owned numerous nurseries including the wonderfully named nursery on Pineapple Place in St John's Wood. Henderson's Pineapple Nursery has been described as one of the great Victorian nurseries, and as a business they were big supporters of the Institution, sat on many committees and supported numerous candidates through the pension award process.

As we look back at the difficulties of the past and see the challenges people still face today, it's clear that some things haven't changed. But through it all, we're still here, offering support, assistance and guidance to those managing similar issues. With the incredible backing of our supporters, we're determined to keep going for another 185 years. Thank you for being part of our journey.

Pineapple Place Nurseries


Growing pineapples has appealed to estate owners and skilled gardeners since the 17th century. Due to the challenging conditions for growing pineapples in the UK, along with the associated costs, they quickly became emblematic of status, wealth, and prosperity. Hence, they are frequently featured in stonework and grand gates. Edward George Henderson was a nurseryman whose family



Photos by Clive Nichols



Our Gardens

 **Our gardens are open!** Go to perennial.org.uk/gardens for opening times and booking.

Our beautiful gardens were gifted to us by special supporters. Under our care they help to build better futures for people in horticulture. When you visit, you're not just enjoying the scenery, you're part of a lifeline.

THE LASKETT

A uniquely biographical garden

The Laskett in Herefordshire is a creative autobiographical garden that celebrates the arts. thelaskett.org.uk

Spring at The Laskett

Perennial presented 'Spring at The Laskett' at the recent RHS Malvern Spring Festival. Our captivating show garden showcased how the vision of creators Sir Roy Strong CH and his late wife Julia Trevelyan Oman CBE can be expressed in any space through thoughtful design, using authentic elements from the actual garden. Designed by The Laskett's Garden Manager, David Lewis, this exquisite garden offered visitors a glimpse of spring at The Laskett, reflecting the original design envisioned by its creators and celebrating their enduring love story.

Featuring iconic elements such as the Victoria and Albert Temple, which dates back to its construction in 1976, the garden exhibited a carefully curated selection of plants and structures chosen by Julia and Sir Roy. The diverse woodland planting, along with formal and informal herbaceous and bulb arrangements, complemented by the architectural features of the garden, capturing the essence of spring.

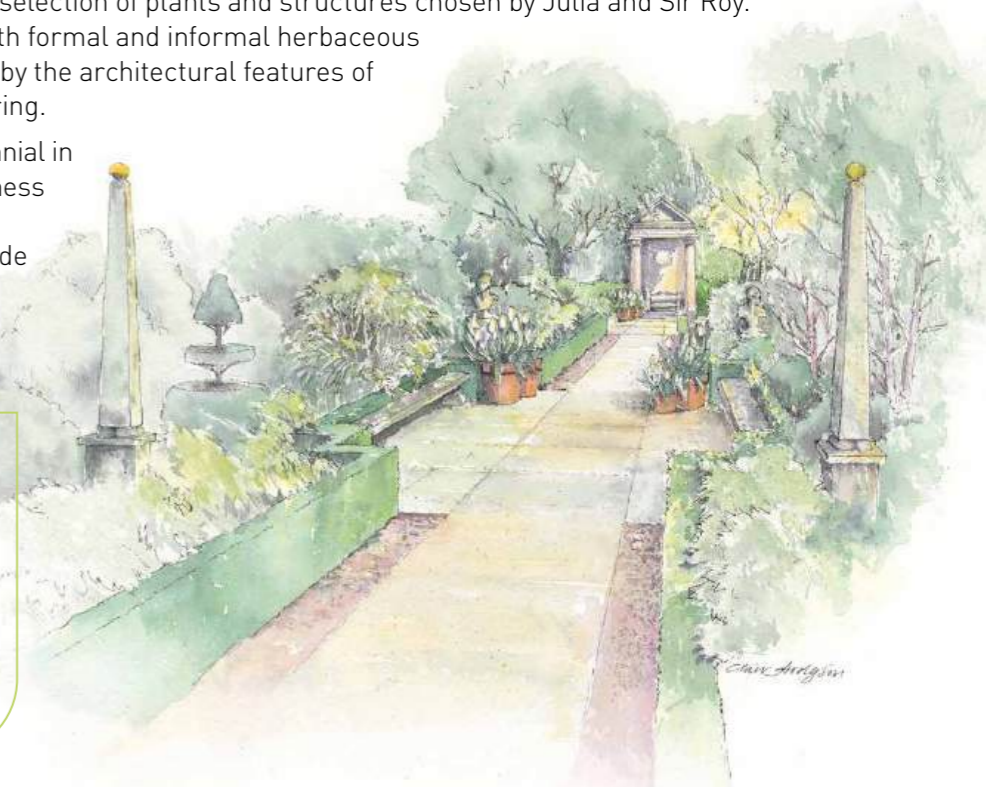
The generous gift of The Laskett to Perennial in 2021 by Sir Roy Strong has raised awareness of this remarkable garden and allows Perennial to express its heartfelt gratitude for this significant contribution.

Opening times

4 April – 31 October 2024

Tuesday & Thursday, 10.30am or 2.30pm. Booking essential.

Weekend opening: NGS open days on 29 June & 6 July.



FULLERS MILL
one of Perennial's gardens

Fullers Mill in Suffolk is an enchanting, quiet waterside oasis. fullersmill.org.uk

Fullers Mill is our award-winning garden and is an enchanting waterside oasis offering unusual shrubs, perennials, lilies and marginal plants. Fresh with new growth, the garden feels full of hope and new beginnings. Scented lilies begin a succession of flowering to create a spectacular show of fragrance and colour into summer. Fullers Mill was gifted to us by the late Bernard Tickner MBE to help people in horticulture and brings tranquillity to visitors.

We host an array of events and activities at the garden that promise to enchant and entertain.

Exclusive sunset evenings for Friends of Perennial: 7 June & 5 July (6pm – 8pm)

Lily Day (celebrating these beautiful flowers): 12 July (11am - 5pm)

Colchicum Days: 13 & 20 September (11am - 5pm)

Visit perennial.org.uk/events for our full list of events.



Opening times

3 April – 30 October 2024
Wednesday 2pm – 5pm | Friday, Saturday & Sunday 11am – 5pm

YORK GATE
one of Perennial's gardens

York Gate is a magical one-acre garden situated near Leeds. yorkgate.org.uk

Restoration of the iconic Folly

Exciting developments are taking place at York Gate, where a range of projects is currently in motion, with the restoration of the much-loved Folly taking centre stage. This iconic structure, erected in 1970, boasts a striking design featuring a towering six-sided roof adorned with cedar shingles and supported by six sturdy wooden legs. Nestled below, a captivating millstone is embraced by rectangular granite sets, adding to the Folly's timeless charm.

For a number of years we've been monitoring the Folly's condition, and this winter, we embarked on its restoration. Thanks to the expertise of Luke Cruse and his team at Cruse Paving, the worn-out larch posts have been sympathetically replaced with durable sweet chestnut, breathing new life into the structure. Larch, while once favoured for its straightness and accessibility, unfortunately succumbs to a short lifespan due to its coniferous softwood nature. Recognising the need for a lasting solution, we've opted for the enduring strength of sweet chestnut, ensuring the Folly's legacy continues for generations to come.

The sizeable multi-part millstone and granite sets forming the base of the Folly had begun to subside, prompting Luke and his team to lift and re-lay them. Initially, we had perhaps naively assumed they would be relatively thin, but it turns out the sections of the millstone are nearly a foot deep!

The restoration of the Folly will be complete as you read this, and we are looking forward to having you join us as we embark on our journey of preservation and rejuvenation at York Gate.



Opening times

3 April – 31 October 2024
Wednesday – Sunday, 10am – 4pm

Mona's Garden
A future Perennial garden

Branching Out with Mona Abboud

Mona's award-winning garden is home to the *Corokia* National Collection, and many other unusual Australasian, Mediterranean and interesting exotic plants, with the emphasis on texture, shapes and contrasting foliage colour.

Following her newly acquired garden extension, Mona has compiled a short book called 'Branching Out' to document her journey, and we're pleased to bring you some excerpts of the first chapter.

At the age of 71 most lifelong gardeners would be resting in their hammocks, if not on their laurels. So why on earth would I choose to embark on the biggest and most challenging task of my horticultural life: buying a neighbouring 600 square metres of overgrown scrubland and adding it to my award-winning garden? Knowing full well the back-breaking physical work this would involve, as well as the huge expense and stress it would inevitably entail? As my friend Steve put it when he first saw the plot: "You must be out of your bloody mind."

But the question remains: why would I want to take on such a big challenge at this stage of my life? The most important factor behind my keenness to purchase this land – verging on an obsession – is that at the end of 2021 I decided to bequest my garden and house to Perennial, ensuring that my garden would survive and carry on into the future. The new extension would be an added bonus, particularly with the proposed



Pick up your copy of **Mona's new book** from the Perennial shop



installation of a new large greenhouse which would allow the propagation and dissemination of not only a new generation of *Corokia* which have been seeding themselves freely in my garden, but also other unusual New Zealand plants.

Plant Fair

East Ruston Old Vicarage, Norfolk - A future Perennial garden

Saturday 8 June 2024 from 10am

Step into the charming world of the Plant Fair at East Ruston Old Vicarage garden. Explore a variety of garden-related stalls featuring everything from vintage tools to beautiful ornaments. Be inspired by talks from nursery experts and join 'Gardeners' Question Time' for gardening tips.

For the artistic, enjoy a flower arranging session with Alison Cooper using garden-fresh blooms. You could even win one of these creations in the raffle! Escape

to this charming fair, reminiscent of traditional garden fetes, where every moment promises joy and discovery.

Admission is £5 per person, or £13 to explore both the fair and garden (no booking required). With tea rooms and a plant sales area, your adventure awaits at East Ruston Old Vicarage.

East Ruston Old Vicarage, East Ruston, Norwich, Norfolk NR12 9HN

eastrustonoldvicarage.co.uk
01692 650432

Tribute to Jennifer Marie Woolveridge 1939-2023

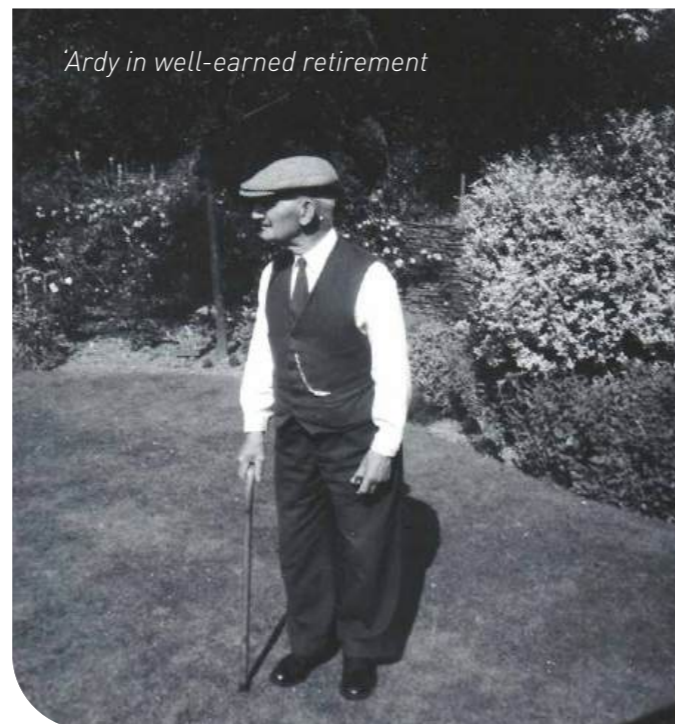


“Tireless in her efforts on behalf of the community”
Peter and Pat Chapman

At Perennial we were very saddened to learn of Jennifer’s illness and then death at the end of 2023. Jennifer was a supporter of Perennial for over 60 years. We are very moved by the longevity of this friendship and would like to express our gratitude for the long-standing support and passion which she had for our charity. To her loving family we offer our sincere condolences as we reflect on the wonderful years of her long life and how she first became involved with the Gardeners’ Royal Benevolent Society, as the charity was then known.

Six decades of dedication began when Jennifer, barely more than 20 years old, took it upon herself to take responsibility for an elderly gentleman who meant a lot to her. As a very young child the family lived with Jennifer’s maternal grandmother. From her earliest years, Jennifer was sent out into the extensive garden with the gardener, ‘Ardy (Archibald Rivers), in the expectation that he would look after her. She swiftly became his ‘little helper’ and so began Jennifer’s ‘lifelong love of plants’.

In his 80s ‘Ardy was retired, unwell and needed somewhere to live.



‘Ardy in well-earned retirement

Colette Carus, Perennial Development Manager, writes a heartfelt tribute to Jennifer Woolveridge, a dedicated supporter of Perennial for many years, expressing appreciation for Jennifer’s unwavering support and dedication to our charity.

Tireless, busy, a true friend of the community, admiration, generous – all words and phrases used in praise of Jennifer’s big-hearted drive to help others. Descriptions echoed in fond remembrance when a community loses a loved one, yet to truly describe Jennifer’s exceptional and awe-inspiring dedication poses a challenge. This is precisely because Jennifer was so remarkable.

Along came Jennifer, in the spirited style for which she is renowned, who made all the arrangements with the Gardeners’ Royal Benevolent Society for ‘Ardy to live in comfort and ease at the residential home then run by the charity in Horton, Berkshire. This was in the mid 1960s and Jennifer remained a valued and committed supporter from that date onwards. ‘Ardy was, in her words, ‘with company and being looked after, living a more fulfilled life’.

The love of plants and gardening, and the shared joy of nurturing everything in the garden, created an enduring bond between gardener and little girl. Jennifer never forgot how patient he was in sharing his knowledge and letting her help.

Many of us may treasure the memory of the person who introduced us to the excitement of learning how to grow plants, or who introduced us to a very special blossom or bloom.

In turn, Jennifer bestowed upon Perennial her loyalty and kindness, in memory of ‘Ardy.

Jennifer was a most incredible woman who lived life to the full, was a Councillor and supported many charitable organisations including Age UK and the Buckinghamshire Gardens Trust, receiving a BEM in 2019 for her voluntary work. Her challenge was for organisations and individuals to take action.

With grateful thanks to Jennifer’s family for the In Memory donations, so kindly and generously offered. We treasure her memory and send our best wishes to Catherine, Richard,



Francesca Murray and Jennifer Woolveridge reminisce over cherished memories

Claire and all those whose lives she touched.

Do you have a cherished memory of someone who sparked your lifelong passion for plants, gardening, or horticulture? Consider honouring their legacy with an In Memory donation, ensuring that their love for nature lives on by supporting those working in horticulture and their

families. And please, think about leaving a gift in your will - these In Memory donations, alongside legacies, are vital in sustaining and expanding the services we provide.

For more information on making a donation In Memory of a loved one, or leaving a gift in your will, please contact legacy@perennial.org.uk

Find the perfect gift

Stepping back to the 1970s the Perennial shop was flourishing, selling a wide range of goods, and Perennial's greeting card sales passed a milestone of over one million sold. Fast forward to 2024, and our cards remain among our best sellers. Much has changed over the years and alongside the shops at our three gardens, our online shop is stocked with garden tools, accessories, and an array of beautiful gifts.

The best thing about shopping with us is that any purchase you make helps us to support people in horticulture to build and live better lives.

Greeting Cards 160x160mm - all blank inside






				
001 In the Garden £2.80	002 Winter Veg £2.80	003 Summer Greenhouse £2.80	004 Spring Container Garden £2.80	005 Man's Best Friend £2.80

Greeting Cards 140x140mm - all blank inside

				
006 Magnolia and Blue Tit £2.50	007 Clematis £2.50	008 Poppy £2.50	009 Tall Bearded Iris with Orange Tip Butterfly £2.50	010 Pelargonium £2.50

Greeting Cards 105x150mm - all blank inside

				
011 Festival Flowers £3.00	012 Happy Birthday £3.00	013 Orchid £3.00	014 Pansies £3.00	015 Summer Study £3.00

				
016 Niwaki Garden Snips. 50mm blades £14.00	017 Nutscene Jute Twine Natural 110m £4.25	018 Niwaki Dry Bag PVC 320 X 120mm £18.00	019 Allotment Essentials, 20x30cm tray, dibber, pots, gloves, twine, pencil, label £23.00	020 Haws Langley Watering Can Green 0.7L £7.99

Escape into a world of blissful relaxation after a hard day working in your garden! Indulge in the sensational scents of our exquisite range of soaps and candles.

Shop our full range: shop.perennial.org.uk



				
021 Orange Grove Boxed Candle Glass holder, 9x8x8 cm, burn time 23h £13.50	022 Lemon Citrus Soap Triple milled with shea butter 200g £6.00	023 Foot Rescue Kit Foot rescue cream and heel balm, 26g each £12.00	024 You Wood Love Socks UK 4-8 UK 9-12 £7.99	025 Dig These Socks UK 4-8 (mint) UK 9-12 (brown) £7.99

Orange Grove Candle
Ignite your senses with our mesmerising Orange Grove Candle, infusing your home with an invigorating scent that is sure to revitalise your spirit.

Lemon Citrus Soap
Back by popular demand, our tantalising Lemon Citrus Soap promises to refresh and is adored by all. Treat yourself today!

A pocket pack of foot rescue treatment
Foot Rescue Cream to soothe and protect feet before and after gardening, and Cracked Heel Balm to soothe soles at the end of the day.

A treat for your tootsies
Bring a smile to your face and treat your feet this spring with our vibrant collection of garden-inspired socks. Crafted from a durable cotton blend, our socks are designed to keep you comfortable while adding a touch of humour.



Order form - Details

No.	Description	Price	Qty.	TOTAL
1. Whilst every attempt will be made to send out your order within five working days, there may be times when we are waiting for stock of an item. Please allow 28 days in this instance.		P&P Goods up to value of £50.00		£3.95
2. Returns will only be accepted within 28 days of delivery and must be in original packaging as received.		P&P Goods value above £50.00		FREE
3. If we are out of stock of an item you have selected, we will offer you a substitution or refund of the same value or more.		Donation		£
TOTAL				£

For details on how we process your data please visit perennial.org.uk/privacy. You can update your contact preferences at any time by contacting us at the address below or email info@perennial.org.uk or call **0800 093 8510**.

Are you a UK tax payer? Tick here and boost your donation by 25p of Gift Aid for every £1 you donate. Gift Aid is reclaimed by the charity from the tax you pay for the current tax year.



I would like to Gift Aid all donations I make to Perennial in the future, or have made in the past four years, until I notify you otherwise. I am a UK taxpayer and understand that if I pay less Income Tax and/or Capital Gains Tax than the amount of Gift Aid claimed on all my donations in that tax year, it is my responsibility to pay the difference.

Please post to: Perennial, 115-117 Kingston Road, Leatherhead, Surrey, KT22 7SU – Alternatively, shop online at: shop.perennial.org.uk or call: **0800 093 8792**

Customer Details	Payment Methods
Title: Forename:	Online perennial.org.uk/shop
Surname:	By phone on 0800 093 8792
Address:	By cheque payable to Perennial and all major credit cards are accepted except American Express .
.	
Postcode:	Card No:
Tel:	
Email:	Expiry Date:
To receive email updates tick here <input type="checkbox"/>	Security No:



Fundraise to help people in horticulture



- 1 CHOOSE YOUR ACTIVITY**
There is always something you can do to fundraise. You could organise a cake sale, coffee morning, or quiz night.
- 2 SET UP YOUR JUSTGIVING PAGE**
Visit the Perennial JustGiving page to set up your own fundraising page.
- 3 ASK FOR DONATIONS**
Ask your friends and family to make the first donations or sponsor your challenge event. Post your fundraising across your social media page and groups.
- 4 KEEP GOING...**
Keep your community updated with your progress. When you have completed your event or challenge, let everyone know how it went, how much was raised, and say thank you for all donations.

Get inspired at perennial.org.uk/dig-deep



Join us

Become a Perennial Partner, Fellow or Friend.



Volunteer

Work at one of our gardens or events.



Events

Book a special event or hold a fundraiser.

perennial.org.uk/getinvolved

Share on social     

Helpline

0800 093 8543



Helping people in horticulture
Perennial